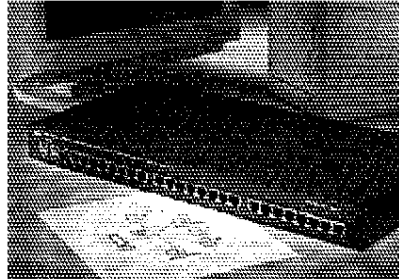




PRODUCT
PROFILE

Digi 4500H Series Departmental Hubs

Digi's Managed or Unmanaged Solutions are Scalable Up to 250 Ports



-
- ❖ Interconnect 10BaseT cabling segments via 24 shielded RJ45 connectors
 - ❖ Two modular Ethernet uplinks on rear panel support 10BaseT, 10Base2, 10BaseFL (single-mode and multimode) and 10Base5 connectivity via Digi's Micro Modules
 - ❖ Supports up to 250 ports in ten-hub stack
 - ❖ Inter-repeater management bus connectivity via two RJ11 connectors
 - ❖ 4511H has an additional EIA-232 serial port on rear panel with a DB9 connector for out-of-band management, plus configuration mode on/off switches
 - ❖ Tri-state diagnostic LED on each port shows Link, Receive and Partition status
 - ❖ LED indicators for global collision, global receive and inter-repeater bus activity; 4511H has additional LED for SNMP active status
 - ❖ 4620U SNMP Management module upgrade available for 4510H
 - ❖ Includes rack mount hardware
 - ❖ IEEE 802.3 compliant

When the responsibility for connecting departments falls on your shoulders, Digi's 4500 Departmental Hubs are the solution you need.

These scalable managed and unmanaged hubs feature two modular uplink ports and 24 10BaseT ports that provide the high volume of connections required to meet the needs of growing corporate networks. When additional ports are required, Digi 4500H hubs can be easily cascaded to accommodate up to 250 ports. Digi's SNMP Management Module is also included with the 4511H for easy configuration and management.

The modular uplink ports make the 4500H hubs well suited for installations where flexibility is a top priority. These ports provide custom connectivity to any Ethernet media type including single-mode and multimode fiber via Digi's Micro Modules.

The 4500H hubs are also ideal for mission critical applications. They support port pairing

and back-up SNMP capabilities to sustain critical network links.

Digi 4511H

Digi designed the 4511H to give you a powerful managed solution at the lowest possible cost. It works in conjunction with Digi's SNMP module to provide easy configuration and management of up to nine 4510H hubs and one 4511H.

The advantage to this configuration is clear. Because you only need one 4511H hub to manage the entire set of hubs, your overall investment is dramatically reduced. A second 4511H hub can easily be added for back-up management capability.

For simplicity and ease of use, the 4511H Departmental Hub includes FastManage, Digi's powerful new graphical management tool. FastManage accesses the MIB-II and hub MIBs of the 4511H by using the SNMP protocol with both in-band (over TCP/IP and IPX protocols) as well as out-of-band management through an EIA-232 port.

Digi 4510H

If you want an unmanaged departmental hub solution that can keep pace with future networking needs, install Digi's 4510H hubs. These hubs feature an upgradable design that lets you add the full management capability of the 4511H hub quickly and easily. In fact, all you have to do to upgrade is insert Digi's 4620U SNMP module into the rear panel of the 4510H hubs.

Specifications

Power Requirements

- 110V/220V, 50/60 Hz internal sensing power supply

Environmental Requirements

- Operating temperature: 32°F to 131°F (0°C to 55°C)
- Relative humidity: (10% to 90%)
- Altitude: 0 to 12,000 ft (0 to 3,660 m)

Regulatory Approvals

- FCC Class A
- UL 1950
- CSA 22.2 No.950
- TUV
- CE

- EN55022 Class B
- EN50082
- EN60950

Dimensions

Departmental Hubs	Depth	Width	Height	Weight
4510H,4511H	6.0 in (15.24 cm)	18.0 in (45.72 cm)	1.75 in (4.44 cm)	6.25 lbs (2.8 kg)

Digi Service And Support

You can purchase with confidence knowing that Digi is here to support you with expert technical support, the industry's strongest warranty (five full years) and a 30-day money-back guarantee.

Models and Part Numbers	
Digi 4510H Stack Hub	26-port workgroup hub.....MIL-4510H
Digi 4511H Stack Hub	26-port managed workgroup hub.....MIL-4511H
Digi 4620H Management Module	SNMP upgrade for Digi 4510H hub....MIL-4620H

Digi International * 11001 Bren Road E.* Minnetonka, MN 55343
 (612) 912-3444 or (800) 344-4273 * FAX (612) 912-4952
 E-Mail: info@dgii.com * World Wide Web: http://www.dgii.com
 European Office- Digi International GmbH * Domkloster 1, 50667 * Köln, Germany
 +49 (0) 221 920 52 0 * FAX: +49 (0) 221 920 52 10 * E-Mail: same as above
 Digi International-Asia Pte Ltd * 13-06 Tower 'A' * 391A Orchard Rd. * Ngee Ann City, Singapore, 238837
 +65 732 1318 * FAX: +65 732 1312 * E-Mail: same as above
 © 1996 Digi International. All rights reserved. The Digi logo is a trademark of Digi International.
 All other brand names and product names are trademarks or registered trademarks of their respective holders.
 GSA: GS-35F-3395D 91000582 A1/1196